



GEOSWATH PLUS RESPONSE GATHERING AND EVALUATION KIT

GeoRGE is a GeoSwath Plus hardware analysis and fault finding tool

GeoRGE has been developed by the GeoSwath team to simplify the process of fault finding. It will help to determine whether a fault lies within the GeoSwath deck unit, the transducer cables or the transducers themselves. GeoRGE can be used with:

GeoSwath Plus / GeoSwath 4
All Transducer Cables

Note: This system is NOT suitable for use with GeoSwath Plus AUV systems.

GeoRGE will not check the functionality of the transducers or the transmit signal path, but will allow the user to check the received signal path. GeoRGE is a very useful tool and will quickly determine whether a fault exists anywhere in the transducer cabling or deck unit receive circuitry.

It will also give an indication of whether the fault lies within the transducer.

GeoRGE is intended to meet the needs of customers who wish to perform functional tests to determine the location of a fault prior to more rigorous system tests. It will also enable a fast diagnostic service, the results of which can be reported to the factory or used for further diagnostics.

User Friendly and Reliable

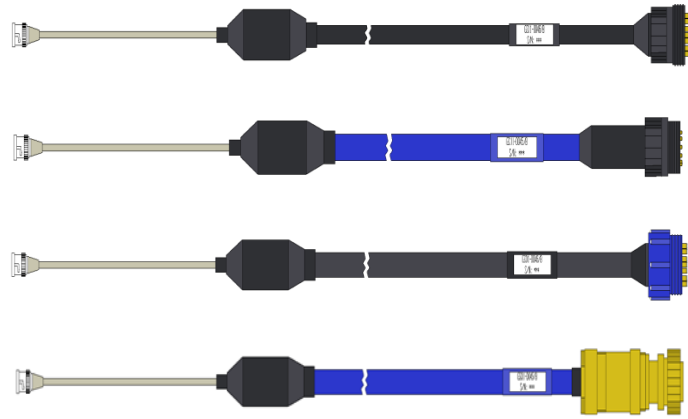
GeoRGE includes a user manual and easy to follow instructions complete with diagrams, connection guidance, pocket generator set-up instructions and test results interpretation so that you can quickly locate the source of the problem.

FEATURES

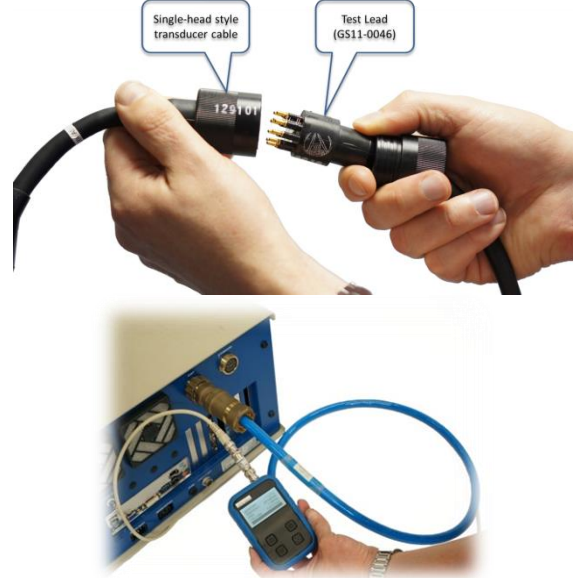
- USB powered
- Lightweight, small sized format
- Easy to use function generator with an LCD display and a 4-button selection control
- Single output. Frequency selectable.
- Tests deck unit or GeoSwath Compact
- Tests transducer cables

Selection of Cables

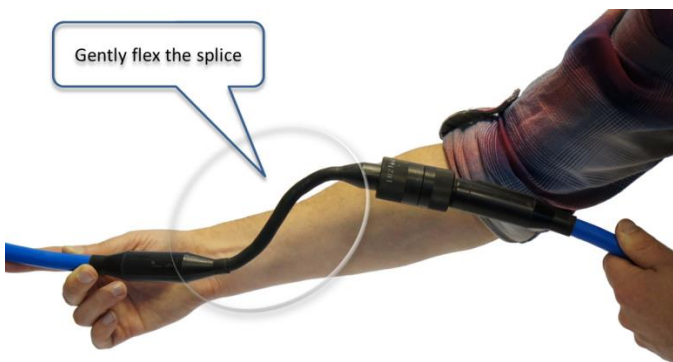
A selection of cables is available depending upon the configuration of your GeoSwath system.



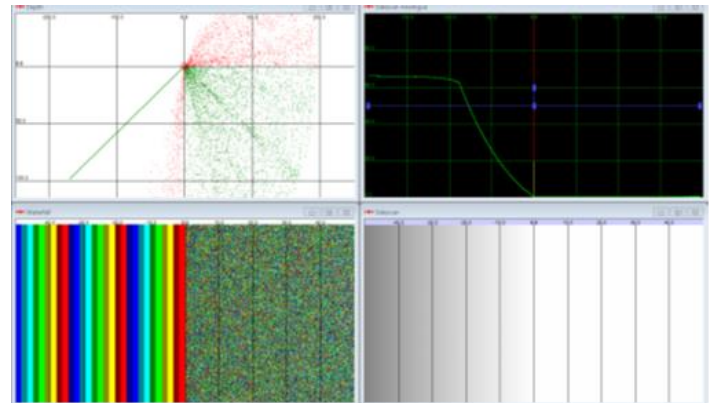
Clear and concise connection instructions are provided.



Clear Instructions



Interpret Results



TECHNICAL SPECIFICATIONS

Width	54 cm
Depth	13 cm
Height	44 cm
Weight	5 kg
Power	USB charger, rechargeable battery

Frequency	125, 250, 500 kHz
Operating Temperature	0° to 40°C
Storage Temperature	-10° to 50°C
Humidity	10% to 90% RH non-condensing
Frequency	125, 250, 500 kHz

Specifications subject to change without notice. E&OE