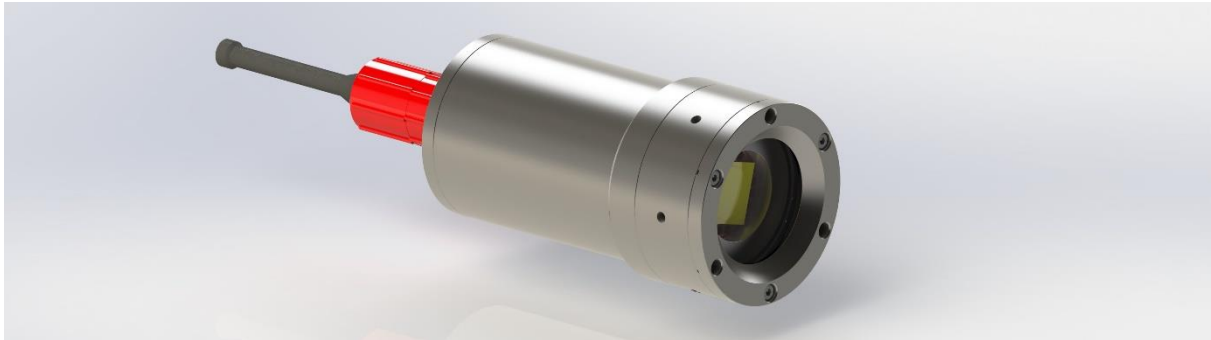


# Datasheet: Oktopus LED deepsea light

## Variant B0804000-D6000



### 1 Mechanics

<b>Maximum pressure (bar)</b>		600
<b>Materials</b>	Covers & tube	Stainless steel
	Glass	Sapphire
<b>Dimensions (mm)</b>	Without connector	Ø 92 x 171
	With connector	Ø 92 x 324
<b>Weight (kg)</b>	In air	5.4
	In water	4.3
<b>Connectors</b>	Power supply + interface	SubConn BH4M

### 2 Electrics

<b>Input voltage (V)</b>		18 - 36
<b>Nominal power consumption (W)</b>		80
<b>Control interface</b>		4 – 20 mA

### 3 Optics

<b>Brightness (lm)</b>	Typical	7,500
<b>Color temperature (K)</b>		4,000
<b>CRI</b>	Typical	80 <sup>1</sup>
<b>Beam angle (°)</b>	In air	88

### 4 Features

<b>Light source</b>		Single high power LED
<b>Dimming</b>	≥ 10 %	Analog
	< 10 %	PWM
<b>Power adjustment</b>		In case of overtemperature

### 5 Operating conditions

<b>Working temperature <math>t_{Operation}</math> (°C)</b>		$-5 \leq t_{Operation} \leq 40$
<b>Storage temperature <math>t_{Storage}</math> (°C)</b>		$-15 \leq t_{Storage} \leq 60$

<sup>1</sup>Versions with larger CRI on request.