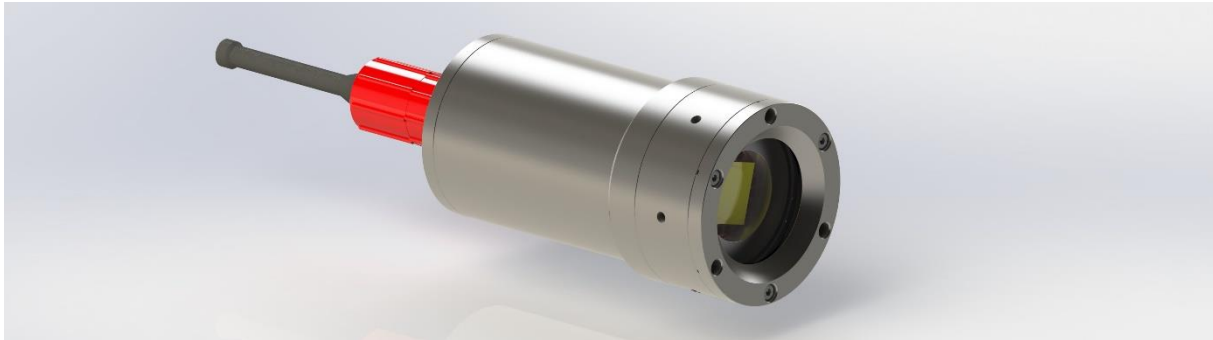


Datasheet: Oktopus LED deepsea light

Variant A1204000-D6000



1 Mechanics

Maximum pressure (bar)		600
Materials	Covers & tube	Stainless steel
	Glass	Sapphire
Dimensions (mm)	Without connector	∅ 92 x 171
	With connector	∅ 92 x 324
Weight (kg)	In air	5.4
	In water	4.3
Connectors	Power supply + interface	SubConn BH4M

2 Electrics

Input voltage (V)		18 - 36
Nominal power consumption (W)		120
Control interface		0 – 10 V

3 Optics

Brightness (lm)	Typical	11,500
Color temperature (K)		4,000
CRI	Typical	80 ¹
Beam angle (°)	In air	88

4 Features

Light source		Single high power LED
Dimming	≥ 10 %	Analog
	< 10 %	PWM
Power adjustment		In case of overtemperature

5 Operating conditions

Working temperature $t_{Operation}$ (°C)		$-5 \leq t_{Operation} \leq 40$
Storage temperature $t_{Storage}$ (°C)		$-15 \leq t_{Storage} \leq 60$

¹ Versions with larger CRI on request.