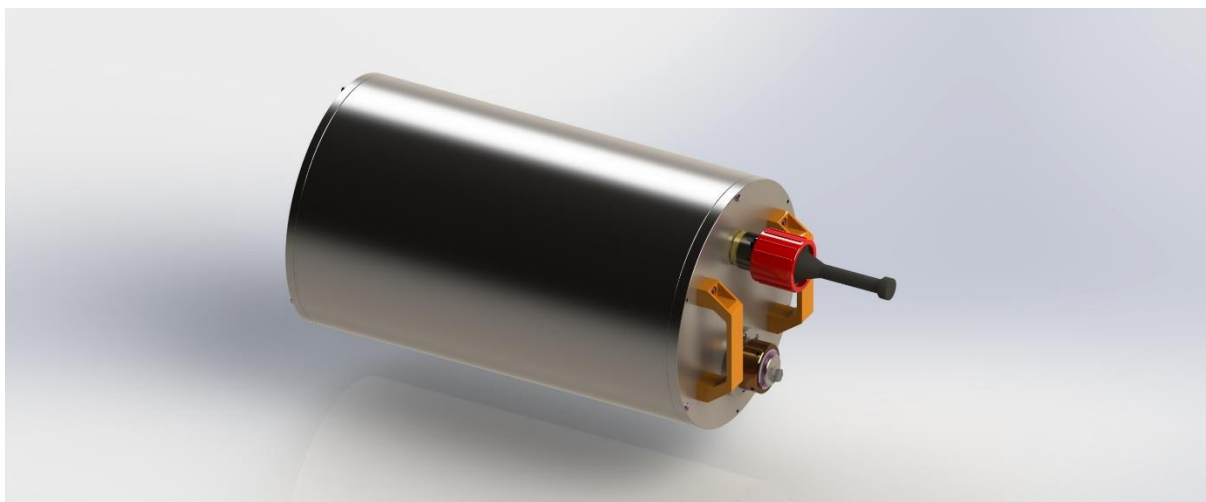




Datasheet: Oktopus lithium deepsea battery

Variant L-3000T24



1 Mechanics

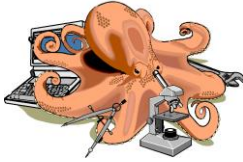
| | | |
|-------------------------------|--------------------|----------------------|
| Maximum pressure (bar) | | 300 |
| Housing material | | Titanium |
| Dimensions (mm) | Without connectors | Ø 275 x 471 |
| | With connectors | Ø 275 x 659 |
| Weight (kg) | In air | 58 |
| | In water | 31 |
| Connectors | Power output | SubConn HPBH4F |
| | Charge input | Oktopus service port |

2 Electrics

| | | |
|--|--|------------------|
| Nominal voltage (V) | | 26.4 (24) |
| Configuration | | 8S20P |
| Chemistry | | LiFePO4 (Li-Ion) |
| Nominal capacity (mAh) | | 50,000 |
| Nominal capacity (Wh) | | 1,320 |
| Discharge current, continuously (A) | | 100 |
| Charge current (A) | | 10 |

3 Features

| | | |
|---------------------------------|-------------|---|
| BMS | | Integrated |
| Balancer | | Integrated |
| Sicherheitsvorrichtungen | Serviceport | The battery can only be charged via the service port. When opening the service port, safe venting is ensured, which also remains in place during the charging process. The battery therefore does not have to be disassembled for charging. |



Oktopus GmbH
Kieler Straße 51
24549 Hohenwestedt, Germany
t +49 4871 490316
f +49 4871 490315
info@oktopus-mari-tech.de

Oktopus GmbH Technik
Wischhofstr. 1-3, Gebäude 13
24148 Kiel, Germany
t +49 431 7209350
f +49 431 7209356
www.oktopus-kiel.de

| | | |
|--|----------------------------|-----|
| | Overcurrent protection | Yes |
| | Undervoltage protection | Yes |
| | Overvoltage protection | Yes |
| | Overtemperature protection | Yes |

4 Operating conditions

| | | |
|--|--|--------------------------------|
| Working temperature $t_{Operation}$ (°C) | | $0 \leq t_{Operation} \leq 30$ |
| Storage temperature $t_{Storage}$ (°C) | | $-5 \leq t_{Storage} \leq 60$ |

Detailed information on handling the battery can be found in the separate documentation.