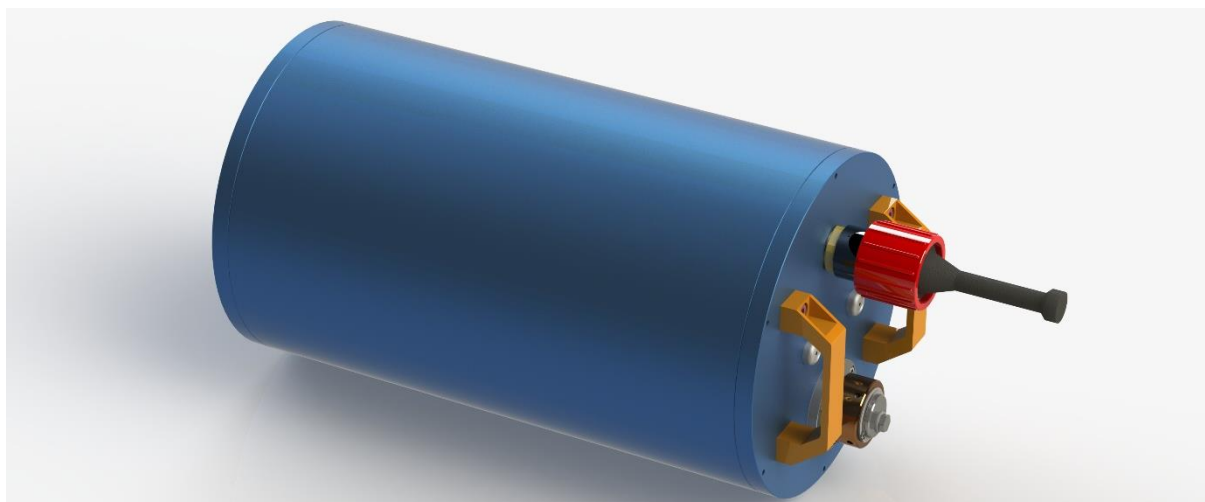




# Datasheet: Oktopus lithium deepsea battery

## Variant L-1000A48



### 1 Mechanics

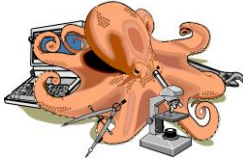
<b>Maximum pressure (bar)</b>		100
<b>Housing material</b>		Aluminum, anodized
<b>Dimensions (mm)</b>	Without connectors	Ø 275 x 476
	With connectors	Ø 275 x 660
<b>Weight (kg)</b>	In air	45
	In water	16
<b>Connectors</b>	Power output	SubConn HPBH4F
	Charge input	Oktopus service port

### 2 Electrics

<b>Nominal voltage (V)</b>		52.8 (48)
<b>Configuration</b>		16S10P
<b>Chemistry</b>		LiFePO4 (Li-Ion)
<b>Nominal capacity (mAh)</b>		25,000
<b>Nominal capacity (Wh)</b>		1,320
<b>Discharge current, continuously (A)</b>		100
<b>Charge current (A)</b>		6

### 3 Features

<b>BMS</b>		Integrated
<b>Balancer</b>		Integrated
<b>Sicherheitsvorrichtungen</b>	Serviceport	The battery can only be charged via the service port. When opening the service port, safe venting is ensured, which also remains in place during the charging process. The battery therefore does not have to be disassembled for charging.



Oktopus GmbH  
 Kieler Straße 51  
 24549 Hohenwestedt, Germany  
 t +49 4871 490316  
 f +49 4871 490315  
 info@oktopus-mari-tech.de

Oktopus GmbH Technik  
 Wischhofstr. 1-3, Gebäude 13  
 24148 Kiel, Germany  
 t +49 431 7209350  
 f +49 431 7209356  
 www.oktopus-kiel.de

	Overcurrent protection	Yes
	Undervoltage protection	Yes
	Overvoltage protection	Yes
	Overtemperature protection	Yes

#### 4 Operating conditions

<b>Working temperature <math>t_{Operation}</math> (°C)</b>		$0 \leq t_{Operation} \leq 30$
<b>Storage temperature <math>t_{Storage}</math> (°C)</b>		$-5 \leq t_{Storage} \leq 60$

Detailed information on handling the battery can be found in the separate documentation.